

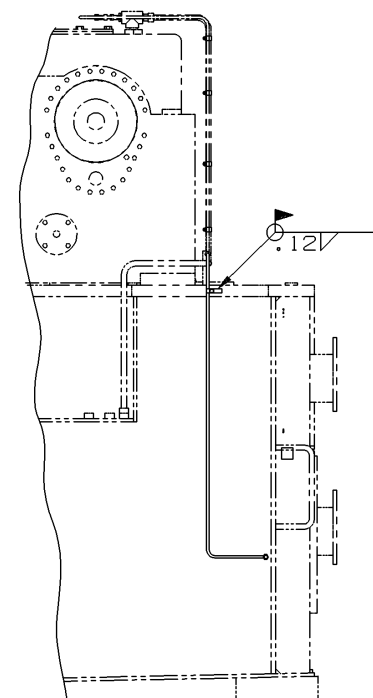
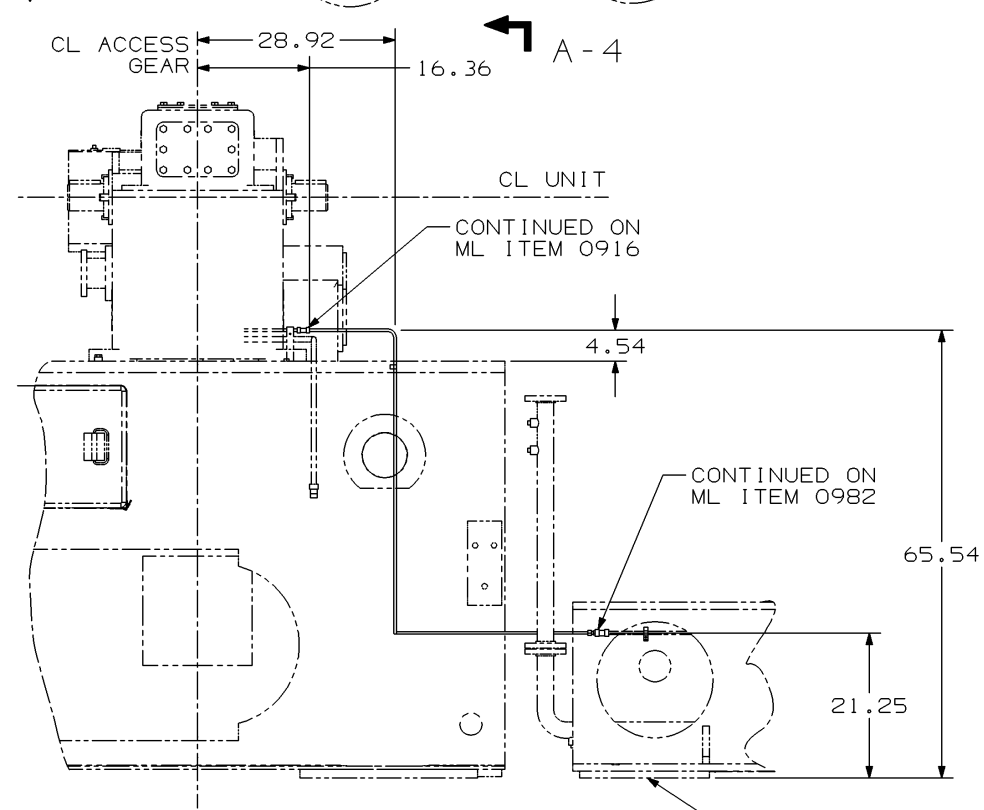
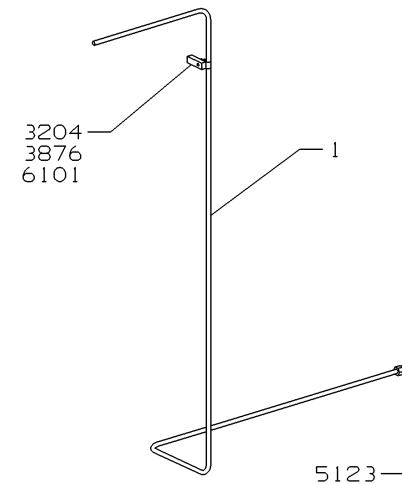
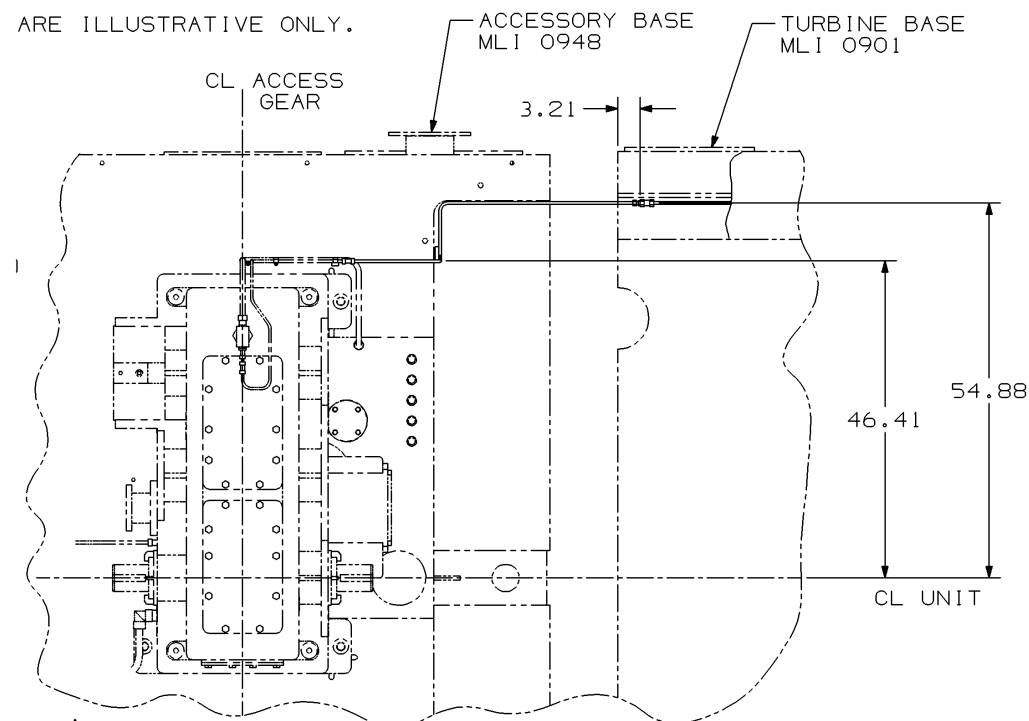
NOTES:

1. GENERAL MACHINING APPLIED PRACTICES ARE PER 348A9200.
2. STRUCTURAL WELDS ARE PER P8A-AG1, FIGURE PER APPENDIX III, FILLER METAL COLUMN AB, PER APPENDIX II.
3. INSTALL AND SUPPORT TUBING PER 215A4435.
4. TUBE RUNS ARE ILLUSTRATIVE ONLY.

SIZE	DWG NO	SH	REV	1
D	193D9092	1	A	1

REV	DESCRIPTION	DATE	APPROVED
A	GENERAL REVISION MP56766 F. BROWN	99-10-27 FOB	JTB CDH

REVISE ON CAD ONLY
UG PART: GS7068-969F
(SPEC: 193D9092)



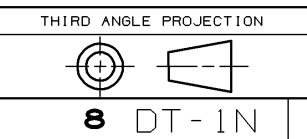
G1

3	INSTR, ASSY-TUBE & FTG	215A4435
2	WELDING-GENL SPEC	P8A-AG1
1	APLD PRAL, GENL MACH	348A9200
IT.	NOMENCLATURE	IDENT
LIST OF COMPLEMENTARY DOCUMENTS		

BOM ISSUED

UNLESS OTHERWISE SPECIFIED	SIGNATURES	DATE	GE Power Generation	GENERAL ELECTRIC COMPANY GAS TURBINE Greenville, SC
DIMENSIONS ARE IN INCHES	DRAWN JOSE L. GARCIA	99-09-17		
TOLERANCES ON:	CHECKED JAMES T. BROWN	99-09-20		
2 PL DECIMALS ±	ENGRG CHET D. HULLUM	99-09-20		
3 PL DECIMALS ±	ISSUED JAMES T. BROWN	99-10-01		
ANGLES ±	QUAL CMT DAN BOYER	99-10-01		
FRACTIONS ±				
APPLIED PRACTICES 348A9200				
SIM TO:	196D1422	SCALE NONE		

PIPING, BASE INTCON CLG AND SLG AIR	FIRST MADE FOR ML-7A1PEA1-14	969F
SIZE	CAGE CODE	DWG NO
D		193D9092
SHEET	1	



DT-1N